

# Adding an EZProxy Extension to Firefox and Chrome

EZProxy is a tool used by the library to enable access to electronic resources. It goes unnoticed by most users, but EZProxy is essential for authentication – that is, communicating with subscription content websites that Ryerson patrons are authorized for access. EZProxy is automatically enabled on the library website, but it can also be enabled through a browser extension when surfing online to access subscription material.

For example, the library subscribes to the resources on the site IEEE Xplore:

<http://ieeexplore.ieee.org/Xplore/home.jsp>

An EZProxy browser extension will modify this URL, granting access to Ryerson library patrons:

<http://ieeexplore.ieee.org.ezproxy.lib.ryerson.ca/Xplore/home.jsp>

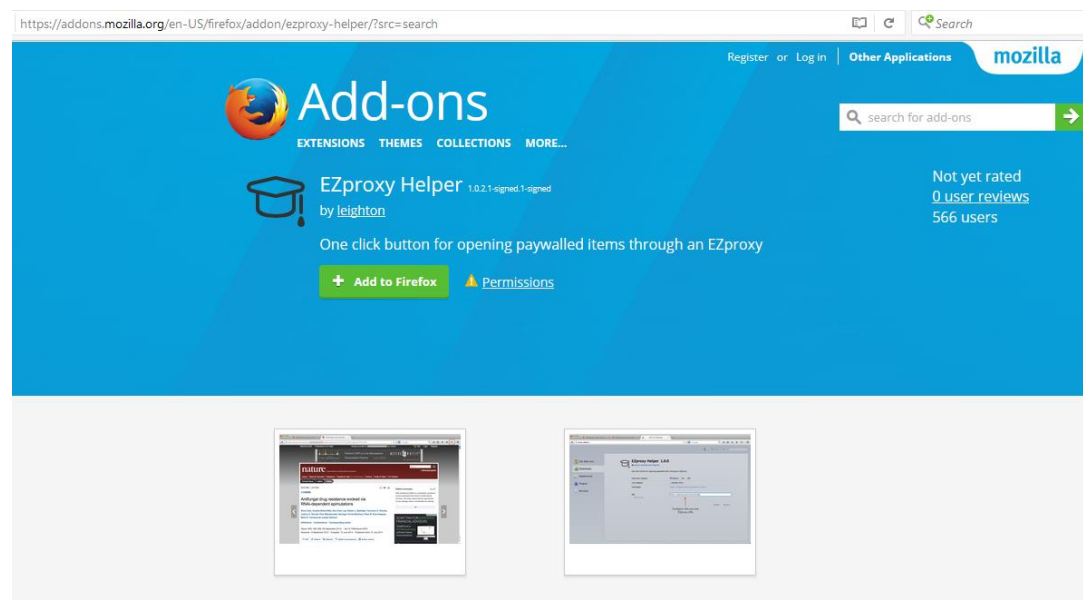
These browser extensions are a useful way to access subscription content, but they aren't perfect. In the event that they don't work correctly, please access the resource directly from the library website:

<https://library.ryerson.ca/>

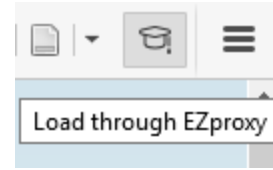
## Firefox

The extension for Firefox is called EZproxy helper, and it can be downloaded from the Firefox webpage:

<https://addons.mozilla.com>



Click “Add to Firefox” to install this extension. Once you do this, a graduation cap icon should appear in your toolbar to the left of the hamburger icon.



To configure the settings, click the hamburger icon and select “Add-ons.” Edit the extension EZProxy helper to include the Ryerson EZProxy URL: <http://ezproxy.lib.ryerson.ca/login?url=>

Get Add-ons

Extensions


Appearance

Plugins

Services

## EZproxy Helper 1.0.2.1-signed.1-signed

By **leighton**



One click button for opening paywalled items through an EZproxy.

EZproxy Helper allows you to redirect a page through an EZproxy with the click

**Installing**

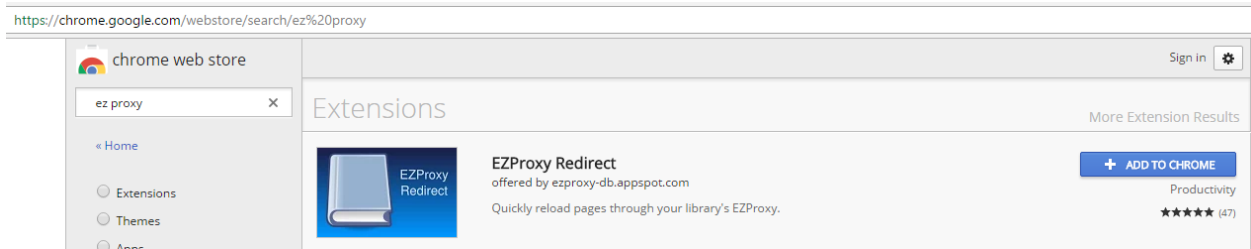
Upon installing EZproxy Helper the first thing you'll want to do is configure it to

In Firefox, click on the menu item “Tools” then the submenu item “Add-ons”,  
Click on the “Extensions” tab  
Click the “preferences” button in EZproxy Helper's list item  
In the “URL” input field write the EZproxy URL of your library or institution. If

Automatic Updates	<input type="radio"/> Default <input checked="" type="radio"/> On <input type="radio"/> Off
Last Updated	May 9, 2017
Homepage	<a href="https://leighton.github.io/ezproxy-helper">https://leighton.github.io/ezproxy-helper</a>
Rating	<a href="#">0 reviews</a>
URL	<input type="text" value="http://ezproxy.lib.ryerson.ca/login?url="/>
EZproxy URL	
New Tab	<input checked="" type="checkbox"/>
Open new tab for EZproxy?	

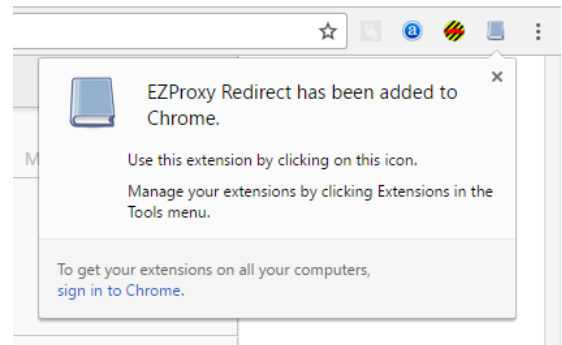
# Chrome

The extension for Chrome is called EZProxy Redirect, and it can be downloaded from the Chrome webpage: <https://chrome.google.com/webstore>



Click “Add to Chrome” to install this extension. Once you do this, a book icon should appear in your toolbar to the left of the menu icon (three dots).

Next, to configure the settings, click the menu icon and select “settings” and then “extensions.” Edit the options for the extension EZProxy Redirect by selecting Ryerson from the dropdown or pasting the URL: <http://ezproxy.lib.ryerson.ca/login?url=>



### EZProxy Redirect Options

The string "\$@" (without quotes) will be replaced with the URL to redirect to. For example <http://www.1>

The list of schools below will auto-update from my [EZProxy database](#)

Here is [a list of examples from other schools](#) (these should all be in the list below).

Select School:

-OR-

If you use a custom URL, please submit your addition/correction to the [EZProxy database](#) so that other

EZProxy URL: