

# Nexus

ISSUE NO. 20/APRIL 2009

A RYERSON UNIVERSITY NEWSLETTER PRODUCED BY THE LIBRARY



Photograph of the construction of the Library building circa 1972. The Sam the Record Man building is visible on the far left of the picture – the site for Ryerson's new Student Learning Centre. Courtesy of the Ryerson Archives



Taken in 2009, this view from the parking garage above the Ryerson Bookstore shows the remnants of the Sam's sign on the wall of the building. Courtesy of the Ryerson Archives.

## Planning Process for a 21st Century Student Learning Centre

As the university begins the process of planning for a new Student Learning Centre in the former Sam the Record Man space, extensive consultation with the Ryerson community is key to ensuring that we meet the diverse needs of our various users.

To facilitate the consultation process, the university has engaged a consulting firm to assist with developing a functional space program for the new Student Learning Centre. They have initiated an inclusive consultation process based on input from Library staff, Ryerson students, faculty, staff and administrators. Input will be gathered through a variety of techniques, including focus groups with various stakeholder groups, as well as survey tours to witness where, how, and why students gather in preferred locations to work. Data assembled through these approaches will be augmented by information from existing Ryerson planning and survey documents, including the Library's strategic plan and the

results of any surveys previously undertaken by the Library. The functional space program that evolves from this process will provide a basis for the design of the Centre, once an architectural firm has been chosen. Though the program may touch on design considerations, its primary focus will be to translate the needs of users into a plan that describes and quantifies the space needed to encompass services, functions and required facilities in the new Centre.

Once an architectural firm has been chosen, there will be additional opportunities to participate and share your vision for Ryerson's Student Learning Centre. Visit the Library website at [www.library.ryerson.ca](http://www.library.ryerson.ca) or look for announcements requesting your involvement in this exciting initiative in the future.

RYERSON  
UNIVERSITY

## Building on Success: Strategic Planning

The Library recently completed its new Strategic Plan for 2008-2013 titled *Building on Success*. Below are some of the key components of the plan, as well as some of the specific initiatives we hope to undertake in support of its realization.

### Building Our Space

As the principal occupant of the new Student Learning Centre, our focus will be to balance the need for study, collections, research and collaborative learning spaces. We will:

- Plan and build the new Student Learning Centre
- Develop a strategy to repurpose our existing space to maximize services that engender student engagement and learning, and support research and knowledge creation

### Building Our Collections and Access

The Library will continue to focus its attention on building appropriate collections to support the undergraduate, graduate and Scholarly, Research and Creative (SRC) needs of the university. We will:

- Manage physical collections efficiently to ensure currency, accuracy, relevancy, access, use and fit with available space
- Maximize value in our Collections budget through evaluation and critical analysis
- Develop our Special Collections and Archives
- Develop and implement an Institutional Repository to house the research output of the university

### Building Our Support of Learning, Teaching and SRC

The Library will continue its commitment to partnering with other services on campus to create the synergies needed to support and facilitate academic success. We will:

- Maintain current partnerships and develop new ones to share expertise in support of teaching, learning and student success
- Foster the development of a governance model for the new Student Learning Centre
- Re-imagine reference services to better support student success
- Focus the Library's information literacy program on learning outcomes

## Staff Notes

The Library has had a number of retirements. We bid a fond farewell to library technicians **Alice Philip**, **Mariam Cheria**, and staff member **Rosemary Garry**.

The Library recently welcomed **Fatima Carvalho** to the Borrower Services staff.

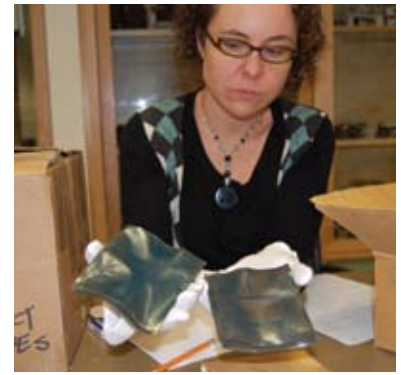
A number of librarians have assumed new or interim positions since the last issue of *NEXUS*. **Bob Jackson** is the Interim Manager of Projects and Facilities. **Diane Granfield** is currently the Interim Manager of Public Services. **Val Lem** is the new Collections Evaluation Librarian. **Brian Cameron** is the new Digital Initiatives Librarian.

The Library welcomed two new librarians to the fold. **Weina Wang** is our new Borrower Services Systems Librarian and **Naomi Eichenlaub** is our new Catalogue Librarian.

Librarian **Susan Patrick** is currently on a six-month study leave.

## New to Special Collections: Donation from *Canadian Architect*

Special Collections recently received a major donation of photographs and negatives in early 2009 from *Canadian Architect* magazine. *Canadian Architect* has continuously published a monthly review of design and practice since 1955 and is considered the most authoritative and reliable resource on the architectural profession in Canada. It is hoped that the establishment of a *Canadian Architect* archive at Ryerson will support research in Canadian architectural history, and encourage growth of that area of study. These images will be salvaged through scanning where possible, and provide an interesting case study for students in the Photographic Preservation and Collections Management MA program.



Pictured here is student Jennifer Givogue, holding some badly deteriorated acetate negatives. The *Canadian Architect* archive contains hundreds of these 4" x 5" negatives from 1955-1970.

## New E-Resources

**ASTM International Standards** provides access to over 11,800 current standards, which are the work of over 30,000 ASTM members. These technical experts represent producers, users, consumers, government and academia from over 120 countries.

**GeoBase** is a multidisciplinary database of indexed research literature on the earth sciences, including geology, human and physical geography, environmental sciences, oceanography, geomechanics, alternative energy sources, pollution, waste management and nature conservation. It covers thousands of peer-reviewed journals, trade publications, book series and conference proceedings.

**Morgan & Claypool Digital Library** was awarded the 2008 Best Reference Work Award by the ASEE Engineering Library Division. This resource consists of 50- to 100-page "lectures" which are self-contained e-books synthesizing an important research or development topic. Each is authored by an expert in the field. The titles are intended to provide an introduction to new fields for established researchers and to provide an accessible source of advanced information for students.

**GreenFILE** offers well-researched information covering all aspects of human impact to the environment. Its collection of scholarly, government and general-interest titles includes content on global warming, green building, pollution, sustainable agriculture, renewable energy, recycling, and more. The database provides indexing and abstracts for more than 384,000 records, as well as Open Access full text for more than 4,700 records.

**Global Market Information Database (GMID)** is Euromonitor International's award-winning online information resource providing business intelligence on industries, countries and consumers. It offers integrated access to internationally comparable statistics, full-text market reports, insightful comments from expert industry and country analysts as well as thousands of sources of further information.

For a complete list of new e-resource acquisitions, please visit: [http://www.ryerson.ca/library/er\\_resources.html](http://www.ryerson.ca/library/er_resources.html)

## New Content for the Social Sciences and Humanities

In September of 2008, the Library announced the acquisition of a rich collection of digital content in social sciences and humanities. These electronic resources have been made possible through the Canadian Research Knowledge Network (CRKN), a consortium of university libraries, including Ryerson, who have dedicated themselves to improving access to scholarly digital content in Canadian universities.

With funding from the government and the Canadian Foundation for Innovation (CFI), CRKN was able to negotiate with publishers to acquire 14 major digital collections through one-time only purchases and multi-year license agreements. This greatly enhances access to social sciences and humanities knowledge in Canada, which CRKN has identified as essential for researchers dedicated to

solving complex, global issues that are both interdisciplinary in nature and broad in scope.

The collection includes primary source material from leading libraries and archives around the world, such as original manuscripts, pamphlets, paintings, classical scores, theatre productions, maps and images. Also included are over 20,000 e-books from major Canadian university presses and international publishers such as Taylor and Francis, Oxford University Press, and Cambridge University Press, as well as a substantial backfile of journal content. To view a complete list of the new acquisitions, please visit: <http://researchknowledge.ca/en/documents/DCIVendorsEFinal.pdf>

A sample of these new electronic resources are listed below:

**Adam Matthew Digital** includes eight collections of manuscripts and rare printed sources that are both detailed enough for scholarly research and accessible enough for undergraduate use.

**Theatre in Video** contains more than 250 plays and more than 100 video documentaries available online in streaming video. Users can bookmark specific scenes, monologues and staging.

**Érudit** is a collection of academic journals, e-books, proceedings, theses and other documents and data that have been funded by the Social Sciences and Humanities Research Council and/or by the Fonds Québécois de recherche sur la société et la culture.

**Classical Scores Library** through **Alexander Press** contains 400,000 pages of the most important classical music scores, manuscripts, and previously unpublished material, allowing for the study and analysis of more than 8,000 musical scores. Users can access multiple types of scores across various composers, genres, and time periods.

## The New 4th Floor

Study space is one of the most important on-campus resources for students, and the Library recently renovated the fourth floor to increase the amount of study space available.

The fourth floor, which was previously occupied by the School of Urban and Regional Planning, now consists of two large open areas to accommodate group and individual study. There are numerous electrical connections in these areas to facilitate the use of laptops and several LCD panels equipped with retractable VGA cables that can be connected to laptops to enable group work. Most of the furniture is mobile, which will provide students with the flexibility to arrange the seating in a variety of configurations depending on their study needs. Wireless connectivity is available throughout the floor.

The open study area on the north side of the floor can be reconfigured to accommodate special events, seating an audience of up to eighty. The area is equipped with a sound system and two large LCD panels that can be used to display presentations. Some of the events the Library has recently hosted in this space include a group viewing of the inauguration of President Barack Obama, and the Library's Writers Read series with Margaret MacMillan.

The Library's Special Collections have been relocated to the fourth floor with a generous open space that includes a reading/study area and staff offices. Two large illuminated display cases have been installed to provide opportunities to better showcase the collection.

There is a reading room to allow for quiet, individual study, as well as lounge space for graduate students in the Immigration and Settlement, and Environmental Management programs.



Pictured above is President Sheldon Levy, who dropped by the Technology Petting Zoo to show staff his Sony Ebook Reader.

## Library 2.0

The Library recently hosted a Technology Petting Zoo to expose staff to some of the latest technology trends. This event was part of the Library's Learning 2.0 initiative, which is a hands-on opportunity for staff to learn about Web 2.0 tools and services and to see how these tools are impacting libraries.

## Sage Benchmarks in Social Research Methods

The Library has acquired *Sage Benchmarks in Social Research Methods*, a well-respected multi-volume set which brings together key articles and book chapters to provide an overview of social research methods, including content, conversation and data analysis, documentary research, action research, historical methods, research design and more. This is an excellent resource for faculty and graduate students embarking on their own research.



Students working on the new 4th floor



## Library Stars

### Student Employee of the Year Award 2007/2008

In 2008, Chief Librarian Madeleine Lefebvre presented the new *Student Employee of the Year Award* to Amy Truong and Suzyo Chilongo, who have been working at the Library since 2005.

The purpose of this award is to reward students who have distinguished themselves through excellence in their work environment. The winners received an award certificate and a prize in the form of a \$100 gift certificate. Congratulations Amy and Suzyo!



Chief Librarian Madeleine Lefebvre congratulates Amy and Suzyo.

## SPEAKING OF THE LIBRARY

### Publications in 2008

**Diane Granfield** co-authored "Preference for Reference: New Choices and Options for Academic Library Users" in *Reference and User Services Quarterly*, 48(1): 44-53.

**Ursula Trescases** published "The role of the library in the first college year: the Canadian perspective" in *Reference Services Review*, 36(3): 301-311.

### Presentations in 2008

**Ophelia Cheung** presented "Libraries and Learning (With or Without the 'E', 'M' or 'T')" at the ED-MEDIA World Conference on Educational Multimedia, Hypermedia & Telecommunication.

**Sue Giles** co-presented "SimplyMap: Mapping Canadian census data the easy way" at the Annual Conference of the Association of Canadian Map Libraries and Archives and the Canadian Cartographic Association (CARTO).

**Madeleine Lefebvre**, Chief Librarian, was a member of a panel discussion at SWAAC (Senior Women Academic Administrators of Canada). The topic was "Career Change: Switching Sports," discussing the challenges inherent in succession planning and recruitment of new administrators.

**Jane Schmidt** presented at the Canadian Library Association (CLA) Conference on "A simplified approach to acquisitions."

A number of librarians submitted posters at the International Federation of Library Associations and Institutions (IFLA) World Library and Information Conference in Quebec City.

- **Sonny Banerjee** and **Graham McCarthy** presented "Is Your Library Website Enough?"
- **Trina Grover** and **Susan Patrick** presented "A University Library Crosses Academic Borders and Enriches Graduate Students' Experiential Learning."
- **Dana Thomas**, **Lucina Fraser** and **Ophelia Cheung** presented "More than Linking: seamless resource delivery with OpenURL."

### ONTARIO LIBRARY ASSOCIATION (OLA) SUPER CONFERENCE 2009

**Brian Cameron** co-presented "Impact Factor and Citation Metrics: What do they Really Mean?"

**Sue Giles** and **Dan Jakubek** presented "Census? Statistics? E-Stat can give you answers!"

**Diane Granfield** co-presented with **Ken Moffatt** from the School of Social Work on "Working with Wikipedia: A Faculty/Librarian Partnership."

**Trina Grover** presented "Cataloguing E-Resources @ your Library."

**Madeleine Lefebvre** and **Bob Jackson** presented on "Sam I was: Ryerson's Master Plan and the new Student Learning Centre."

**Weina Wang** and **Fangmin Wang** presented their poster "Step by Step Conversion from Traditional Website to Drupal CMS."



[www.library.ryerson.ca](http://www.library.ryerson.ca)

## Library Hours

**Monday to Friday – 8 a.m. to midnight**  
**Saturday and Sunday – 10 a.m. to midnight**

Please address all comments and correspondence concerning this publication to:

Cecile Farnum, Editor, *Nexus*

Library, 350 Victoria Street, 2nd Floor, Toronto,

Ontario M5B 2K3. Telephone: 416-979-5000, ext. 4093

**Nexus**